

# GWBS

INNOVATING FOR A GREENER TOMORROW



وَلَا تُفْسِدُوا فِي الْأَرْضِ بَعْدَ إِصْلَاحِهَا وَادْعُوهُ خَوْفًا وَطَمَعًا إِنَّ  
رَحْمَتَ اللَّهِ قَرِيبٌ مِّنَ الْمُحْسِنِينَ

(سُورَةُ الْأَعْرَافِ : ٥٦)

**AND CAUSE NOT CORRUPTION UPON THE EARTH AFTER ITS  
REFORMATION. AND INVOKE HIM IN FEAR AND ASPIRATION.  
INDEED, THE MERCY OF ALLĀH IS NEAR TO THE DOERS OF GOOD.**

(AL-A'RAF :56)

Just as the earth has been reformed for balance, our approach ensures responsible resource use, reduced carbon emissions, and minimal ecological impact. Through innovation and sustainability, we contribute to building a greener future without harming nature.

## CEO'S MESSAGE


Dear Valued Stakeholders,

Welcome to GreenWave Building Solutions (GWBS). Our journey is rooted in a steadfast commitment to sustainability, innovation, and excellence in the construction materials industry. We recognize the evolving demands of our planet and the pivotal role our industry plays in shaping a sustainable future.

At GWBS, we are dedicated to delivering eco-friendly, high-performance building materials that not only meet but exceed global standards. Our focus on research and development ensures that we remain at the forefront of technological advancements, providing our clients with solutions that are both sustainable and efficient.

We believe that our success is intertwined with the success of our clients, partners, and the communities we serve. Upholding values of integrity, transparency, and social responsibility, we strive to build lasting relationships founded on trust and mutual respect.

Thank you for your continued support and partnership. Together, we can construct a greener, more sustainable world.



Warm regards,  
Fadi Chaabo  
Chief Executive Officer

## رسالة الرئيس التنفيذي

أصحاب المصلحة الكرام الأعزاء،

مرحبا بكم في GreenWave Building Solutions (GWBS). رحلتنا متجذرة في التزام ثابت بالاستدامة والابتكار والتميز في صناعة مواد البناء. نحن ندرك المتطلبات المتطورة لكوكبنا والدور المحوري الذي تلعبه صناعتنا في تشكيل مستقبل مستدام.

في GWBS ، نحن ملتزمون بتقديم مواد بناء صديقة للبيئة وعالية الأداء لا تلبى المعايير العالمية فحسب ، بل تتجاوزها. يضمن تركيزنا على البحث والتطوير أن نبقي في طليعة التطورات التكنولوجية ، ونوفر لعملائنا حلولاً مستدامة وفعالة.

نعتقد أن نجاحنا متشابك مع نجاح عملائنا وشركائنا والمجتمعات التي نخدمها. من خلال التمسك بقيم النزاهة والشفافية والمسؤولية الاجتماعية ، نسعى جاهدين لبناء علاقات دائمة قائمة على الثقة والاحترام المتبادل.

شكرا لكم على دعمكم المستمر وشراكتكم. معا ، يمكننا بناء عالم أكثر اخضراراً واستدامة.

تحياتي الحارة ،  
فادي شعبو  
الرئيس التنفيذي

**GWBS**  
GREENWAVE BUILDING SOLUTIONS

# **TABLE OF CONTENTS**

- 01.** Company Overview
- 02.** Vision & Mission
- 03.** Our Expertise & Solutions
- 04.** Sustainability Commitment
- 05.** Green Building Materials Portfolio
- 06.** Why Choose GreenWave?
- 07.** Strategic Global Positioning
- 08.** Partnerships & Industry Affiliations
- 09.** Company Policies
- 10.** Organizational Chart

# 1. COMPANY OVERVIEW

GreenWave Building Solutions (GWBS) is a forward-thinking provider of eco-friendly construction materials that redefine the future of the building industry. Our expertise spans sourcing, developing, and supplying sustainable, high-performance materials that reduce environmental impact while maximizing efficiency and durability.

As global demand for sustainable infrastructure grows, GWBS is dedicated to meeting this challenge with cutting-edge solutions that align with modern green building practices. Our mission is to empower architects, developers, and contractors with materials that promote energy efficiency, reduce carbon footprints, and contribute to a sustainable future.



GWBS recognizes the continued high demand for traditional construction materials. While our core focus remains on eco-friendly solutions, we are committed to ensuring that even our traditional construction materials are manufactured in a way that prioritizes sustainable practices and minimizes environmental carbon footprint.

## Core Values

- **Sustainability:** Prioritizing eco-friendly practices in all aspects of our operations.
- **Innovation:** Continuously developing cutting-edge solutions to meet industry challenges.
- **Quality:** Upholding the highest standards in product performance and reliability.
- **Integrity:** Conducting business with transparency, honesty, and respect.

## 2. VISION & MISSION



### **Vision**

"Making Connections, Delivering Sustainable Innovation."

To be the global benchmark in sustainable construction solutions, driving transformative change in the industry through innovation, eco-conscious materials, and cutting-edge technologies. We envision a future where sustainable infrastructure is not just an option but the foundation of progress, shaping resilient, high-performance, and environmentally responsible built environments worldwide.

### **Mission**

At GreenWave Building Solutions, we redefine the future of construction by pioneering high-performance, eco-friendly materials that combine sustainability, durability, and efficiency. Through advanced research, global partnerships, and technology-driven solutions, we deliver innovative, scalable, and economically viable materials that meet the evolving needs of modern infrastructure. Our commitment to carbon reduction, circular economy principles, and environmental stewardship positions us at the forefront of the global green building movement.

## 3. OUR EXPERTISE & SOLUTIONS

### Industry Leadership in Green Building Materials

GreenWave Building Solutions is committed to providing world-class sustainable materials, ensuring that modern buildings meet stringent environmental regulations while maintaining superior structural integrity and energy efficiency.

#### Key Areas of Expertise:

- ✔ Sustainable Building Materials Supply
- ✔ Green Innovation & Research
- ✔ Eco-friendly Construction Consultancy
- ✔ Strategic Global Sourcing & Distribution



## 4. SUSTAINABILITY COMMITMENT

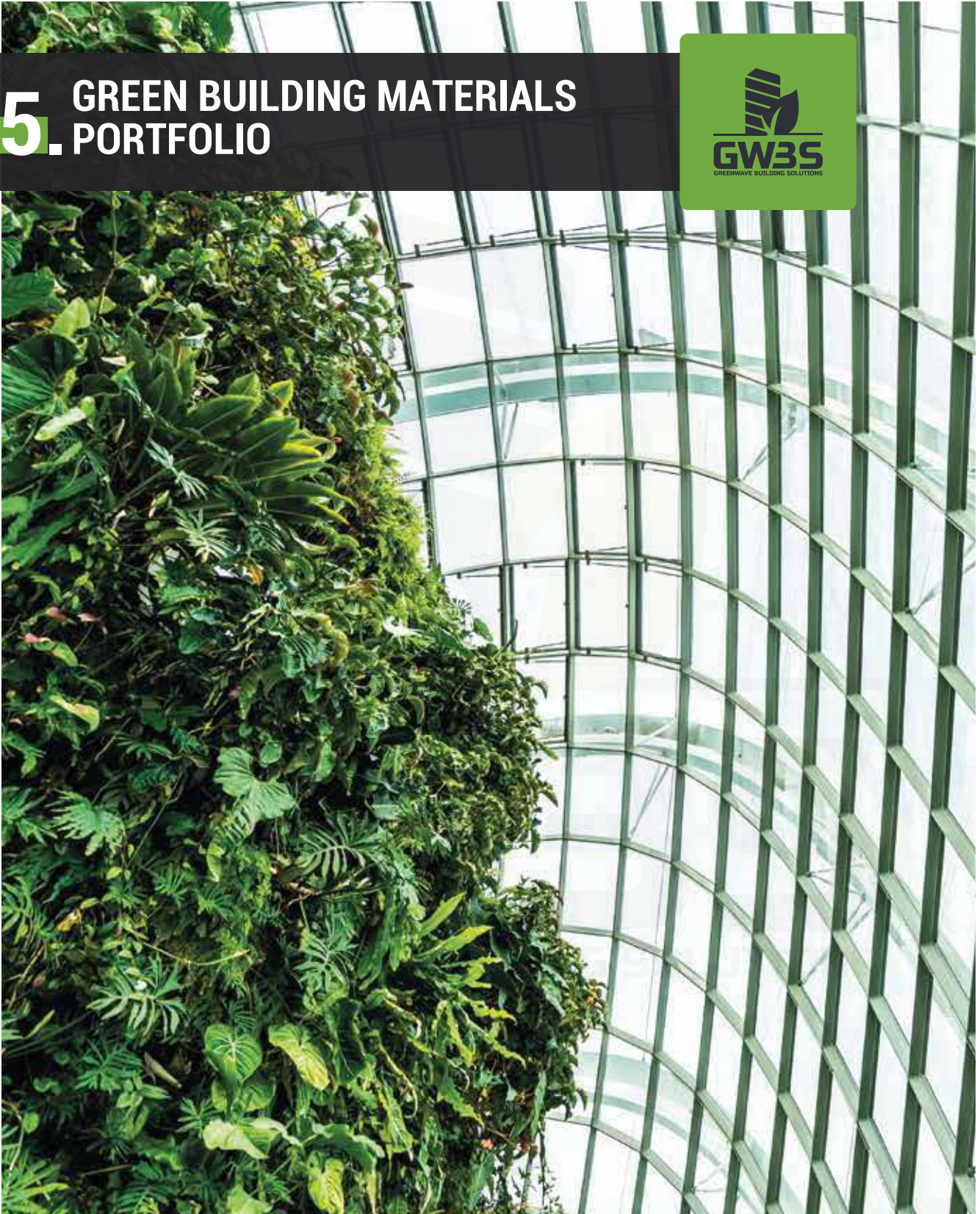
Our approach is rooted in the principles of sustainability and circular economy. Every material we supply is carefully selected based on:

- Lower Carbon Emissions
- Energy Efficiency
- Resource Conservation
- Waste Reduction & Recycling

We actively collaborate with global industry leaders to introduce next-generation building materials that align with international green building standards.



**5. GREEN BUILDING MATERIALS  
PORTFOLIO**



## FLY ASH AND GROUND GRANULATED BLAST FURNACE SLAG (GGBFS)

### Description:

- **Fly Ash:** A byproduct of coal combustion in power plants, utilized as a supplementary cementitious material.
- **GGBFS:** Derived from the quenching of molten iron slag, serving as a sustainable alternative to Portland cement.

### Benefits:

- **Environmental Impact:** They reduce reliance on traditional cement, lowering CO<sub>2</sub> emissions.
- **Durability:** Enhances concrete strength and longevity.
- **Workability:** Improves the handling and placement of concrete mixes.

### Applications:

- Structural concrete
- Mass concrete projects
- Pavements and roads

### Applicable Standards:

- **EN 1-197:** Cement composition, specifications, and conformity criteria.
- **ASTM C618:** Specification for coal fly ash and raw or calcined natural pozzolan for use in concrete.



## GEOPOLYMER CEMENT



### Description:

An inorganic polymer formed by activating aluminosilicate materials with alkaline solutions, offering a sustainable alternative to traditional cement.

### Benefits:

- **Low CO<sub>2</sub> Emissions:** Significantly reduces carbon footprint.
- **High Durability:** Exhibits superior resistance to chemicals and high temperatures.
- **Rapid Strength Gain:** Achieves high strength in a shorter time frame.

### Applications:

- Infrastructure projects
- Fireproofing applications
- Waste encapsulation

### Applicable Standards:

- **EN 1-197:** Cement composition, specifications, and conformity criteria.
- **ASTM C1157:** Performance specification for hydraulic cement.

## BIO-BASED FIBER-REINFORCED POLYMERS (FRP)

### Description:

Composite materials combining natural fibers (e.g., flax, jute, hemp) with bio-based resins, offering sustainable reinforcement options.



### Benefits:

- **Lightweight:** Reduces structural load.
- **High Strength:** Provides excellent mechanical properties.
- **Renewable:** Utilizes sustainable raw materials.

### Applications:

- Building facades
- Interior components
- Reinforcement of concrete structures

### Applicable Standards:

- **EN 15804:** Sustainability of construction works – Environmental product declarations.
- **ISO 14040:** Environmental management – Life cycle assessment principles and framework.



## RECYCLED PLASTIC BUILDING MATERIALS

### Description:

Products manufactured from post-consumer and industrial plastic waste, transformed into usable building components.

### Benefits:

- **Waste Reduction:** Diverts plastics from landfills.
- **Durability:** Resistant to rot, pests, and moisture.
- **Low Maintenance:** Requires minimal upkeep.

### Applications:

- Decking and fencing
- Insulation materials
- Modular construction components

### Applicable Standards:

- **EN 15804:** Sustainability of construction works – Environmental product declarations.
- **ISO 14021:** Environmental labels and declarations – Self-declared environmental claims.



## BAMBOO-BASED CONSTRUCTION MATERIALS

### Description:

Construction materials derived from bamboo, a rapidly renewable resource, processed into various building products.

### Benefits:

- **Sustainability:** Rapid growth rate and high CO<sub>2</sub> absorption.
- **Strength:** Comparable to traditional timber.
- **Aesthetics:** Provides a natural and appealing finish.

### Applications:

- Flooring
- Structural elements
- Decorative features

### Applicable Standards:

- ISO 22156: Bamboo structural design.
- ISO 22157: Bamboo – Determination of physical and mechanical properties.





## **BAMBOO-BASED CONSTRUCTION MATERIALS**





## SOLAR REFLECTIVE ROOFING MATERIALS



### Description:

Roofing materials designed with high solar reflectance to reduce heat absorption, enhancing building energy efficiency.

### Benefits:

- **Energy Efficiency:** Lowers cooling costs by reflecting solar radiation.
- **Thermal Comfort:** Maintains cooler indoor temperatures.
- **Durability:** Resistant to UV degradation.

### Applications:

- Residential and commercial roofing
- Industrial facilities
- Retrofit projects

### Applicable Standards:

- **ASTM C1549:** Standard test method for determination of solar reflectance.
- **ASTM E1980:** Standard practice for calculating solar reflectance index of horizontal and low-sloped opaque surfaces.



## 6. WHY CHOOSE GWBS?

- Pioneering Sustainable Construction Solutions
- Innovative, Research-Driven Product Development
- International Network & Strategic Partnerships
- Customizable Solutions for Any Project Size
- Commitment to Reducing Carbon Footprint

## 7. STRATEGIC GLOBAL POSITIONING

GreenWave Building Solutions operates with a global outlook, partnering with international distributors and industry leaders to bring cutting-edge, sustainable construction solutions to markets worldwide.

- ✔ Supplying as Global Sustainable Vendors
- ✔ Expanding into GCC, European & Asian Markets
- ✔ Collaborating with Architects, Contractors & Developers Worldwide



## **8. PARTNERSHIPS & INDUSTRY AFFILIATIONS**

We actively engage with leading organizations and experts in sustainable construction, forging partnerships that drive innovation and industry progress.

- ✓ Collaboration with international eco-building initiatives
- ✓ Participation in global construction & sustainability forums
- ✓ Alignment with leading green building practices

# 9. COMPANY POLICIES



# GREENWAVE BUILDING SOLUTIONS

## SECURITY POLICY

**GreenWave Building Solutions** is committed to safeguarding the confidentiality, integrity, and availability of all company assets, both physical and digital, to ensure compliance with **local and international regulatory, operational, and contractual requirements.**

### **Our Commitment**

We pledge to:

- **Comply with all applicable security laws, regulations, and industry standards** in the regions where we operate.
- **Identify, assess, and manage security risks** associated with our facilities, supply chain, and data systems.
- **Protect company assets**, including raw materials, equipment, intellectual property, and digital infrastructure, against theft, misuse, or damage.
- **Restrict unauthorized access** to company premises, manufacturing sites, and IT systems.
- **Implement cybersecurity measures** to safeguard confidential company data and client information.
- **Provide security awareness training** to all employees to ensure a culture of responsibility and risk mitigation.

All employees are required to comply with this policy and report any security concerns.

Regular security audits will be conducted to ensure adherence to best practices.

Approved by:



**Fadi Chaabo**  
*Chief Executive Officer*

# GREENWAVE BUILDING SOLUTIONS

## MANAGEMENT POLICY

The management of **GreenWave Building Solutions** is committed to the **development, implementation, and continuous improvement** of an Integrated Management System (IMS) aligned with internationally recognized standards.

### **Corporate Objectives**

We will achieve our strategic goals by implementing the following principles:

- **Delivering high-quality eco-friendly construction materials** that meet or exceed customer expectations.
- **Ensuring regulatory compliance** with national and international standards for sustainable building solutions.
- **Maintaining a safe and efficient work environment** that prioritizes employee well-being.
- **Reducing environmental impact** through sustainable sourcing, responsible manufacturing, and waste minimization.
- **Encouraging innovation** in green building technologies to remain at the forefront of the industry.
- **Fostering a culture of continuous improvement** by setting and reviewing measurable objectives at all levels.

This policy is communicated to all employees, stakeholders, and business partners. It is reviewed periodically to ensure its continued relevance and effectiveness.

Approved by:



---

**Fadi Chaabo**  
*Chief Executive Officer*

## **GREENWAVE BUILDING SOLUTIONS**

### **HEALTH, SAFETY, AND ENVIRONMENT (HSE) POLICY**

At GreenWave Building Solutions, we prioritize the **health and safety of our employees, clients, and the communities** we serve while ensuring responsible environmental practices. We are committed to **zero workplace incidents** and the continual improvement of our HSE performance.

#### **Our Commitments**

- **Provide a safe and healthy work environment** for all employees, contractors, and visitors.
- **Comply with international HSE standards** and local regulations in all our operational regions.
- **Ensure safe handling, storage, and transportation** of raw materials and finished products to prevent environmental hazards.
- **Regularly assess workplace risks** and implement proactive measures to prevent accidents, injuries, and occupational illnesses.
- **Develop emergency preparedness and response plans** to effectively manage any unforeseen incidents.
- **Minimize environmental impact** by promoting energy efficiency, reducing emissions, and implementing sustainable waste management solutions.
- **Train and engage employees** in safety protocols and environmental awareness to foster a strong HSE culture.

Our HSE policy is fundamental to our success and will be continuously improved to align with best practices and industry advancements.

Approved by:



---

**Fadi Chaabo**  
*Chief Executive Officer*

# GREENWAVE BUILDING SOLUTIONS

## QUALITY POLICY

**GreenWave Building Solutions** is dedicated to achieving **total customer satisfaction** by delivering high-quality, sustainable construction materials that comply with **national and international standards**.

### **Our Quality Commitments**

- **Adopt industry best practices** to ensure consistent product quality, durability, and environmental responsibility.
- **Meet or exceed customer expectations** through rigorous quality control measures.
- **Ensure compliance** with quality management frameworks.
- **Implement continuous improvement processes** based on data-driven assessments and client feedback.
- **Foster a culture of quality awareness** among employees, suppliers, and partners to uphold our high standards.
- **Utilize advanced testing and certification protocols** to verify the performance and reliability of our materials.
- **Maintain ethical sourcing and responsible supply chain management** to enhance product integrity.

We actively promote this policy throughout the organization and expect all employees to uphold the highest quality standards in their roles.

Approved by:



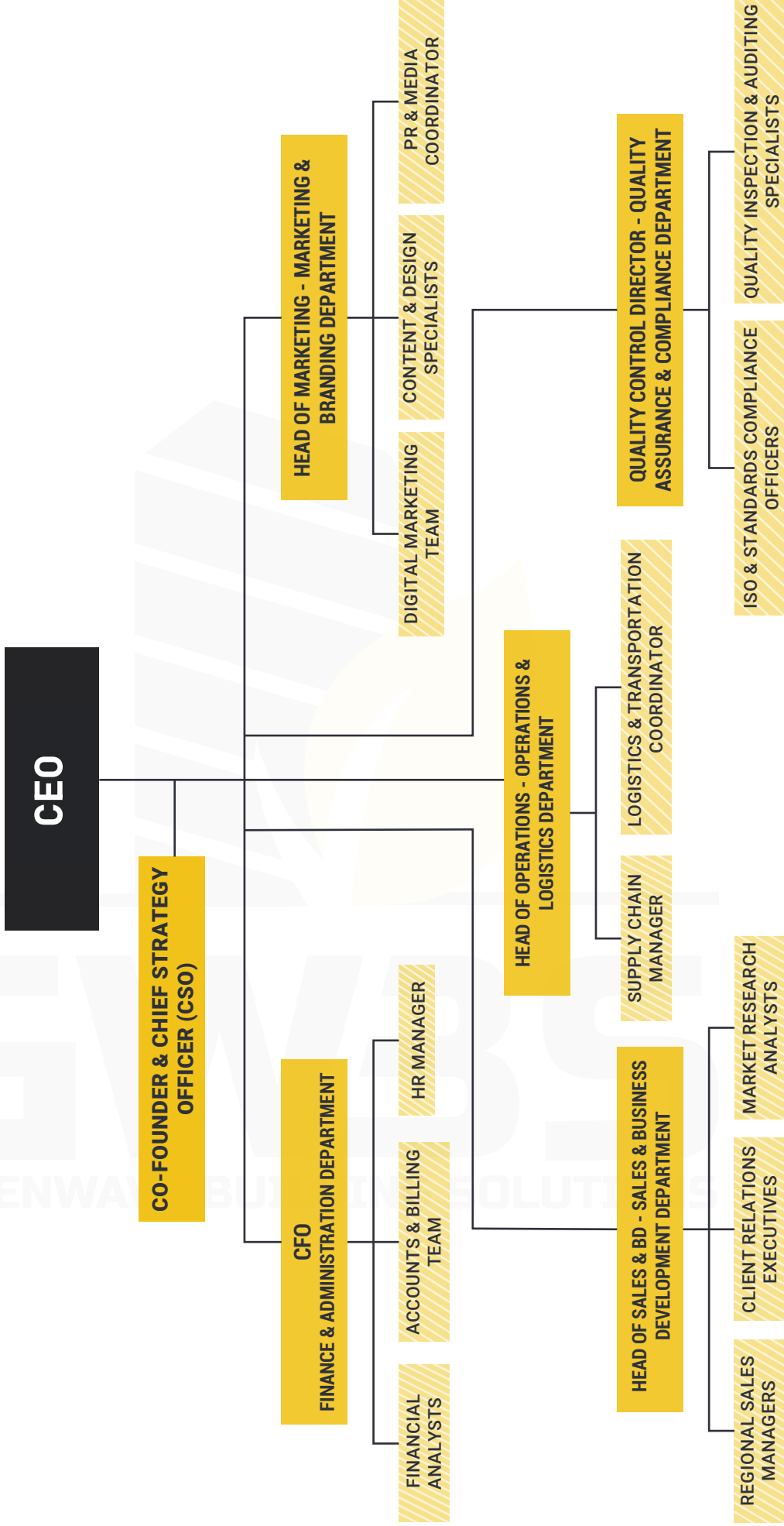
**Fadi Chaabo**  
*Chief Executive Officer*



# 10. ORGANIZATIONAL CHART



The organizational structure of GreenWave Building Solutions ensures efficient operations and streamlined decision-making:





**Headquarter**

Ras Al Khaimah, United Arab Emirates  
[business@greenwavebuildingsolutions.com](mailto:business@greenwavebuildingsolutions.com)  
[www.greenwavebuildingsolutions.com](http://www.greenwavebuildingsolutions.com)